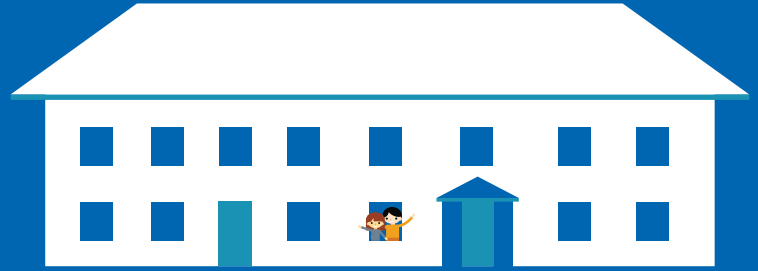


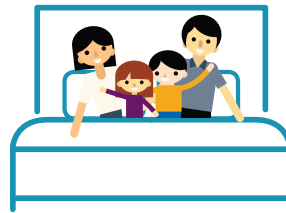
HOUSE OF MERCY HOMELESS CENTER

The House of Mercy is a 25-bed homeless center that provides homeless families throughout southern Wisconsin and northern Illinois with short-term emergency shelter. In addition to giving families a safe, warm place to live, staff helps residents develop individualized action plans aimed at achieving stable housing.



1996-PRESENT

- Shelter nights—174,527
- Individuals served—6,609
- Families housed after staying at the Center—1,314
- Volunteer hours served—177,942
- Facility at capacity 95% of the year
- Waiting list almost 12 months per year



2018 NUMBERS

- Shelter nights—8,874
- Individuals served—284
- Volunteers—161

VOLUNTEER OPEN HOUSE

Held the third Tuesday of each month at 5:30 pm. Enjoy a tour, orientation and learn about our services.



For more information or to volunteer, call (608) 754-0045.

MONETARY DONATIONS

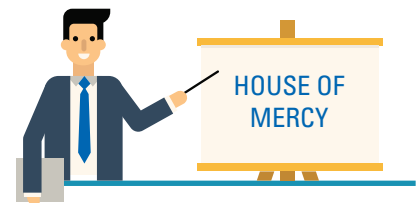
Used for:

- Job placement assistance
- Financial counseling
- Rental assistance
- Parenting classes
- Medical expense assistance
- Nutrition counseling
- Transportation assistance



HOW YOU CAN HELP

- Volunteer your time—weekday and overnight shifts available.
- Contribute to our Wish List of needed items.
- Invite us to area service clubs, organizations and churches to share our story.



House of Mercy Homeless Center
320 Lincoln St., Janesville, WI 53548

mercyhealthsystem.org

 **Mercyhealth**TM
Development Foundation

House of Mercy

WISH LIST

Personal care items

Deodorant
Lip balm
Diapers (sizes 4 and 5)
Baby wipes
Baby shampoo/soap

Shampoo

Conditioner

Toilet paper
Facial tissues
Hairbrushes
Petroleum jelly
Baby oil
Nail files
Fingernail clippers
Mouthwash
Blue Magic hair care

Body wash

Household items

Cereal bowls
Kitchen utensils, silverware
and knives
Storage containers
Alarm clocks
Garbage bags (tall kitchen)
Postage stamps
Plastic wrap
Aluminum foil
Paper towels
Ziploc® bags
Household tools
(screwdriver, hammer, nails)

Food items

Sugar

Soup

Spices

Coffee creamer (powder)

Coffee

Salt and pepper

Vegetable oil

Cleaning/laundry supplies

Dish soap

Powdered laundry detergent

Scouring pads/kitchen scrubbies

Anti-microbial Febreze®

Lysol® wipes

Bleach

Vinegar

Miscellaneous

Scissors

Sharpie® fine point black markers

Copy paper

Post-its®

Stomachache medicine (over the counter)

Cold medicine (over the counter)

Ibuprophen

Tylenol®

Bolded items are in high demand.

Items can be dropped off at the Center, 8 am-10 pm, seven days a week.

If you would like to donate clothes or toys, please take to Castaways Thrift Shop, 922 Milton Ave., Janesville.